

# **Mission of the Environmental Subcommittee**

## **Spaceport Camden Steering Committee**

- Understand and communicate concerns.
- Work effectively with the EIS process.

### **What we will not do –**

- Interfere with anyone's right to communicate directly with the FAA.
- Argue the merits of any environmental concern.
- Perform any job assigned to the FAA's environmental consultants.

### **What we may eventually do –**

- Review permit applications.
- Recommend actions.

# SPACEPORT CAMDEN CONCEPTUAL OUTLAY

100 acres of facilities on 400 acres of uplands



For "liquid-fueled, medium-lift-class, orbital and suborbital vertical launch vehicles"

# Up to 12 launches per year

12 Wet Dress Rehearsals

12 Static Fire Engine Tests

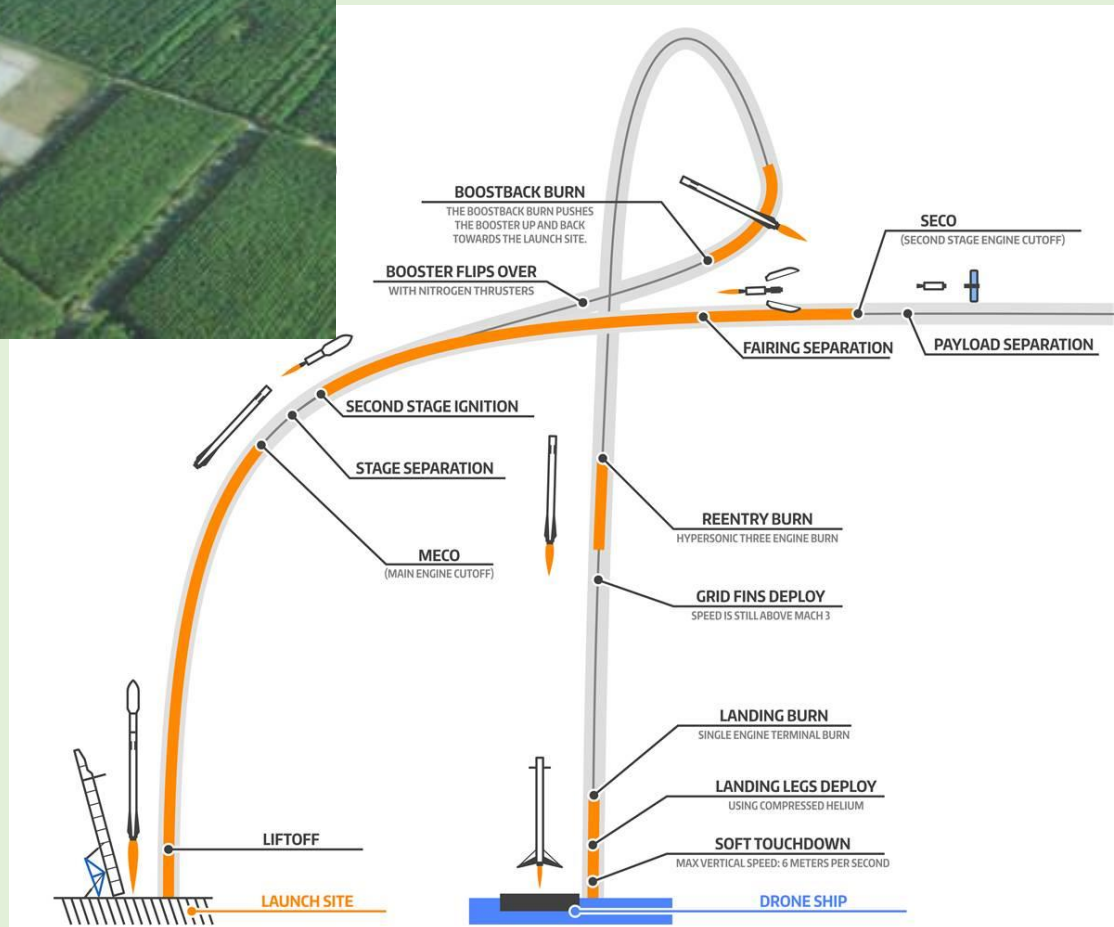






# And...

## Up to 12 first-stage landings per year

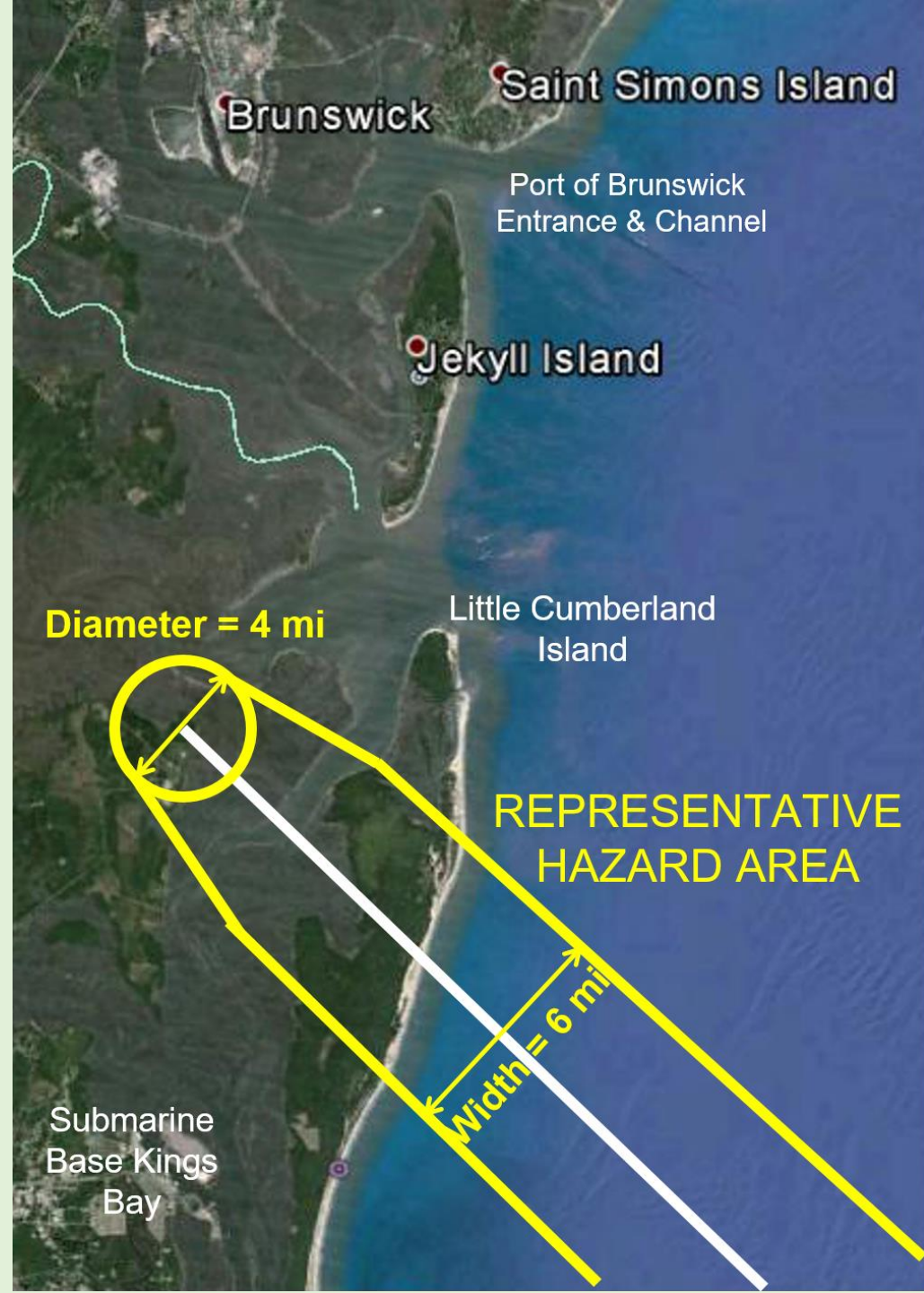


# Example Trajectory

(could be different for each launch)

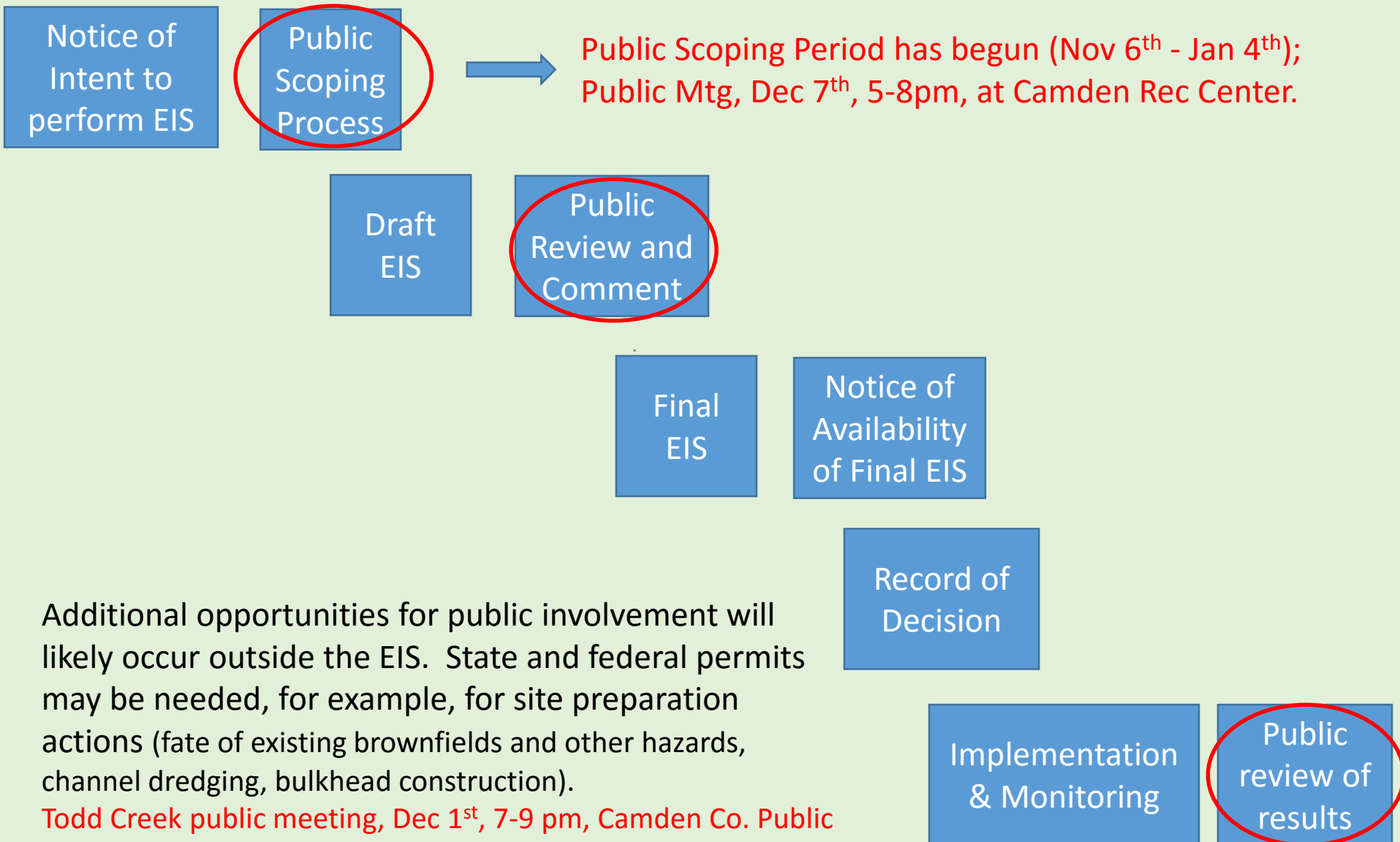
## Hazard Area –

Uninvolved public requested to leave for launch (width shown is typical).



# Flow Chart for an Environmental Impact Statement (EIS)

(An EIS is done because significant environmental effects may or will occur)



COUNCIL ON ENVIRONMENTAL QUALITY  
EXECUTIVE OFFICE OF THE PRESIDENT

# A Citizen's Guide to the NEPA

*Having Your  
Voice Heard*



DECEMBER 2007

## National Environmental Policy Act Sec. 101(b) [42 USC § 4331]

(b) In order to carry out the policy set forth in this Act, it is the continuing responsibility of the Federal Government to use all practicable means, consistent with other essential considerations of national policy, to improve and coordinate Federal plans, functions, programs, and resources to the end that the Nation may —

1. fulfill the responsibilities of each generation as trustee of the environment for succeeding generations;
2. assure for all Americans safe, healthful, productive, and aesthetically and culturally pleasing surroundings;
3. attain the widest range of beneficial uses of the environment without degradation, risk to health or safety, or other undesirable and unintended consequences;
4. preserve important historic, cultural, and natural aspects of our national heritage, and maintain, wherever possible, an environment which supports diversity, and variety of individual choice;
5. achieve a balance between population and resource use which will permit high standards of living and a wide sharing of life's amenities; and
6. enhance the quality of renewable resources and approach the maximum attainable recycling of depletable resources.



# 1050.1F Desk Reference

Federal Aviation Administration  
Office of Environment and Energy

*July 2015*

## Table of Contents

1. Air Quality
2. Biological Resources
3. Climate
4. Coastal Resources
5. Transportation
6. Farmlands
7. Hazardous Materials, Solid Waste, and Pollution Prevention
8. Historical, Architectural, Archeological, and Cultural Resources
9. Land Use
10. Natural Resources and Energy Supply
11. Noise and Noise-Compatible Land Use
12. Socioeconomic, Environmental Justice, and Children's Environmental Health and Safety Risks
13. Visual Effects
14. Water Resources
15. Cumulative Impacts
16. Irreversible and Irretrievable Commitment of Resources
17. Categorical Exclusions



Motion to Adopt  
the Background and Purpose Document (Revision 4)

# Converting Concerns into Questions for the FAA's EIS Consultants

## Example concern (from a letter to the editor of the local newspaper):

*Perchlorate is a component of rocket fuel, and it has very negative effects on the human body at low levels. It can affect thyroid hormone chemistry, resulting in depression, anxiety, unexplained weight gain, and hair loss, among other things.*

*Unbalanced thyroid hormone levels in a pregnant woman can result in mental retardation, hearing and speech loss, and motor skill deficits in her offspring. When they are older, children whose thyroid hormone levels are subpar can experience attention deficit disorder and a lowered motivation to learn.*

*Perchlorate is very difficult and expensive to clean up. Is it worth having a spaceport here to put our children and our drinking water at risk?*

## Online fact check:

- Yes, perchlorate causes thyroid damage;
- EPA regulates it;
- Manufactured for solid rocket fuel and commercial fireworks;
- Notice of Intent mentions only liquid-fueled rockets.

## RESULTING QUESTIONS FOR THE EIS CONSULTANTS

1. Will perchlorate be released at Spaceport Camden in sufficient amounts to affect the ability of the thyroid gland to produce growth hormone in developing fetuses, children, or adults who live near either the launch site or the flight path, or drink groundwater from nearby wells?
2. How will the exposure to perchlorate from rocket launches at Spaceport Camden compare in intensity and duration to that released during Fourth of July celebrations in Camden County?
3. The proposed action is for liquid-fuel rockets. If perchlorate is an issue only with solid-fuel rockets, what would be the required process to change the license to allow strap-on solid fuel rockets or other solid fuel use at Spaceport Camden, and then what would the exposure to perchlorates be?

# A List of Questions for the FAA and their EIS Consultants to Consider

Our role –

- Transmit to FAA during public scoping.
- Discuss further with the FAA if asked.
- Evaluate answers in the Draft EIS.